

SmartPM™

Welcome to the future of construction risk management

SmartPM™ is a next level project analytics software specifically designed to combat delays, reduce overruns and minimize dispute costs for project stakeholders. SmartPM™ has successfully automated the very difficult, time consuming and specialized schedule analysis processes deployed by top tier consultants to avoid, mitigate and manage through these types of problems

The Schedule Holds the Key

The schedule is the only data set in construction that connects all project stakeholders together into one “system.” Therefore, it is the only data set that can *systematically* identify project risks, delays and overruns accurately.

Simply Upload Your XER or MPP Schedule File(s)



“Shortly after we engaged SmartPM for a trial period, we realized we had found something that no other company could provide. The ability to present our teams with actionable, easy-to-comprehend performance-based metrics while quantifying schedule compression and feasibility made SmartPM the clear choice for us.”

Josh Bergstrom, Ryan Companies
Director of Field and Training

Project Analytics Portal

Access an intuitive portal that offers deep insights related Schedule Quality, Changes, Critical Path Delay and Recovery. Plus the ability to create scenarios and model outcomes

Auto-Generated Reports

SmartPM generates custom reports that can be used to facilitate better OAC meetings and as support for time extension requests.

Portfolio Dashboard

Track Key Schedule Performance Metrics related to Progress, Delays, Compression and Estimated Completion across all of your projects

Automated Analysis

SmartPM significantly increases the Analytical output of Project Controls and Scheduling professionals

SmartPM™

Darren Fouts
VP, Sales | SmartPM Technologies
cell: 678-725-2221
dfouts@smartpmtch.com

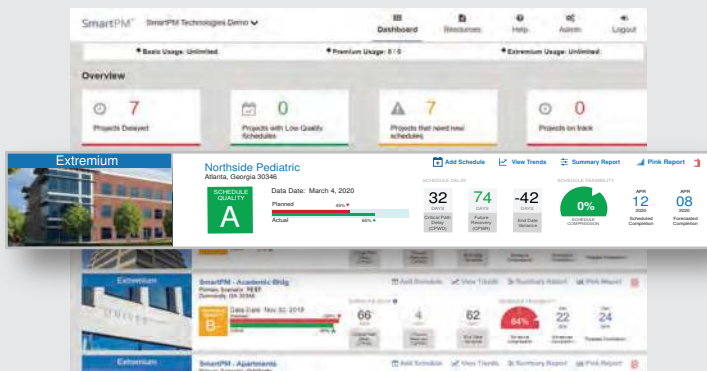


Game Changing Features

1. **Executive Level Portfolio Dashboard:** View Schedule Analytics and Trend Graphs to identify the project(s) falling behind schedule and high risk for delays and overruns
2. **Project Oversight Analytics:** Features like Schedule Quality Rating, Compression Index, Percent Complete, Plan Versus Actual, and Days Delayed enable users to monitor and control project performance in real time.
3. **Schedule Change Analysis and Milestone Tracking:** This comprehensive suite of analytics allows users to identify high risk changes, perform what-if scenarios, and track milestones in minutes.
4. **Forensic Delay Analysis:** Run an Automated Delay Analysis in a fraction of the time required by manual processes to objectively understand where projects went wrong, who was responsible, and why.

How SmartPM™ Works

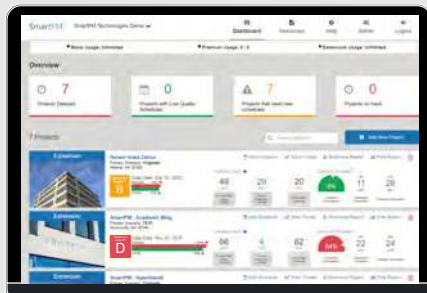
The SmartPM™ Project Analytics Platform extracts data from project schedules to generate meaningful analytics and useful insights that stakeholders can rely on to manage, avoid, and overcome challenges related to overruns, delays and disputes.



5-Step Analytical Process

1. Schedule Quality Analysis
2. Schedule Change/Recovery Analysis
3. Critical Path Delay Analysis
4. Compression & Feasibility Analysis
5. Predictive Analytics & Forecasting

Instant Portfolio Analytics



Dashboards & Reporting

Auto Generated Reports



Project Trends & Analysis

Deep-Dive Data Modeling



Performance & Oversight Analysis

SmartPM is trusted by Leaders in Commercial Construction

