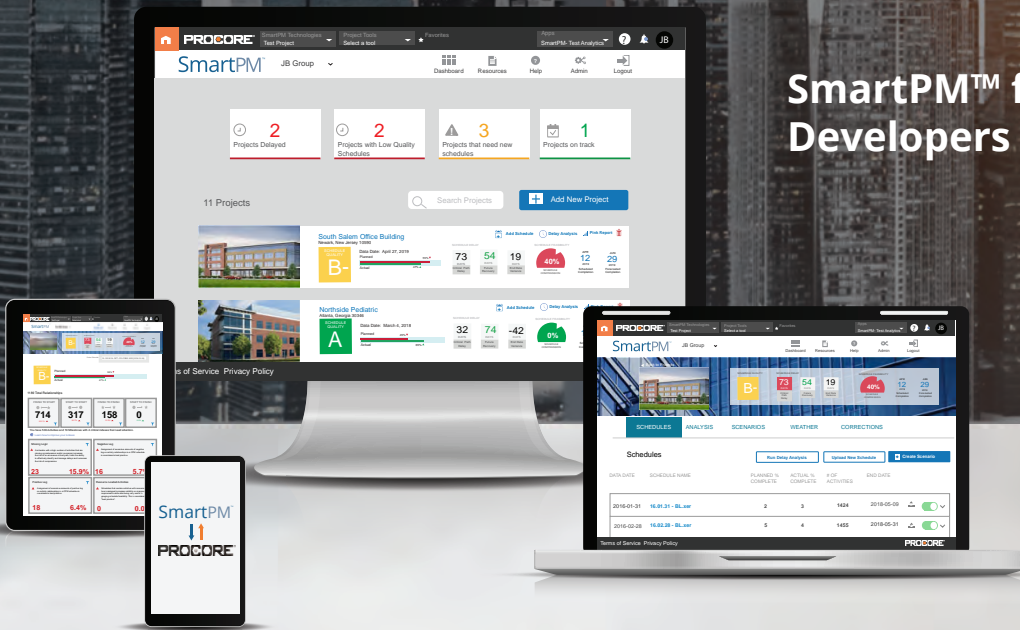


## SmartPM™ for Commercial Real Estate Developers and Owners



### The SmartPM™ and Procore Integration

As a Commercial Real Estate Developer or a company that owns real estate assets, you have likely experienced project delays and received questionable requests for time and money. In the past the only way to assess these claims was by hiring a top-tier consultant. Not anymore.

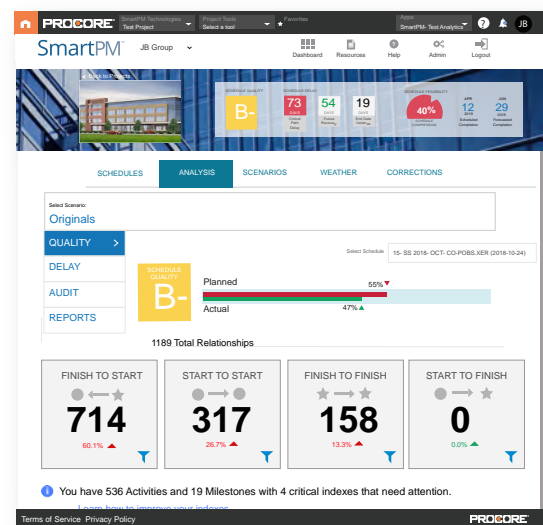
Now you can monitor, improve, and optimize all of your projects on your own by using Automated Project Analytics Technology. The SmartPM™ and Procore Integration provides Commercial Real Estate Developers and Owners with seamless access to SmartPM's Project Oversight, Schedule Monitoring, and Forensic Delay Analysis capabilities directly from within the Procore system. With one click of a button, they can:

- Review Schedules for Completeness, Quality, Changes and Compression
- Analyze Progress, Performance and Delays in Real Time
- Accurately Forecast Feasible Completion Dates
- Run a Complete and Automated Forensic Delay Analysis in minutes

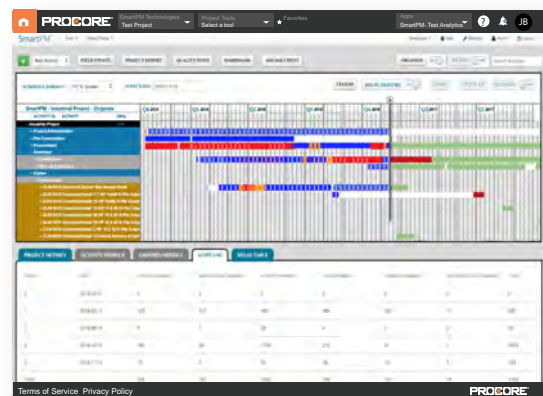
*"The SmartPM™ analytics platform has been instrumental in helping us better understand project performance and mitigate future risk. The result has been a savings of \$700,000 on a single project and the peace of mind that comes with confidently forecasting realistic end dates for every project within our portfolio."*

- Ryan Swingruber, VP of Development at Stoneleigh Companies

### Schedule Quality Analysis

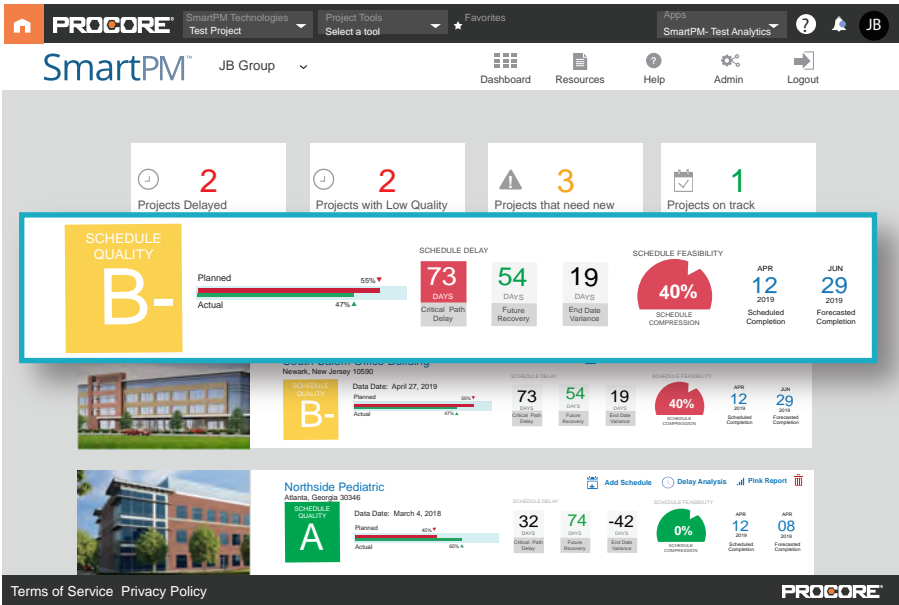


### Audit Log • Critical Path Delay Analysis



## How SmartPM™ Works

The SmartPM™ Project Analytics Platform extracts data from project schedules stored in Procore to generate meaningful analytics and useful insights that stakeholders can rely on to manage, avoid, and overcome challenges related to overruns, delays, and disputes. SmartPM's proprietary algorithm employs a 5-step analytical process, to perform powerful analytics and convert them to digestible intelligence for the user.



## 5-Step Analytical Process

1. Schedule Quality Analysis
2. Recovery Analysis
3. Critical Path Delay Analysis
4. Feasibility Analysis
5. Predictive Analytics

## Key Features for Developers and Owners

1. Project Oversight Analytics: Features like Schedule Quality Rating, Compression Index, Percent Complete, Plan Versus Actual, and Days Delayed enable Procore users to monitor and control project performance in real time.
2. Schedule Change Analysis and Milestone Tracking: This comprehensive suite of analytics allows Procore users to identify high risk changes, perform what-if scenarios, and track milestones in better, more analytical ways.
3. Forensic Delay Analysis: Run an Automated Delay Analysis in a fraction of the time required by manual processes to objectively understand where projects went wrong, who was responsible, and why.



For more information about the SmartPM and Procore Integration, visit the Procore App Marketplace

[www.smartpmtech.com/smartpm-for-procore](http://www.smartpmtech.com/smartpm-for-procore)